

- Yocto Linux operating system, specifically for Linux industry equipment
- NXP i.MX9352 2x Arm® Cortex®-A55@1.7GHz and 1x Arm® Cortex®-M33@250MHz
- Onboard 1GB LPDDR4 and 32GB eMMC5.1
- Rich peripheral interfaces, GbE network port, USB, RS485/RS232/TTL, CAN-Bus, LVDS/ MIPI-DSI/, MicroSD, USER Keys/GPIOs, Audio and other interfaces
- 118x88mm a rugged small form factor SBC, fanless and ultra-quiet, supports long-term device operation
- Long-term supply plan, 15 years available
- Provide carrier board customization service

## Introduction

The DJ-MCIMX93 single-board computer (SBC) is based on NXP's i.MX93 series application processor, featuring a dual-core Arm Cortex-A55 and ARM cortex-M33. It integrates features that help improve the performance and energy efficiency of Linux® edge applications and the Arm Ethos™-U65 microNPU, helping developers create more powerful, cost-effective, and energy-efficient ML applications. Furthermore, it utilizes NXP's innovative Energy Flex architecture to optimize the performance and energy efficiency of industrial and IoT devices.

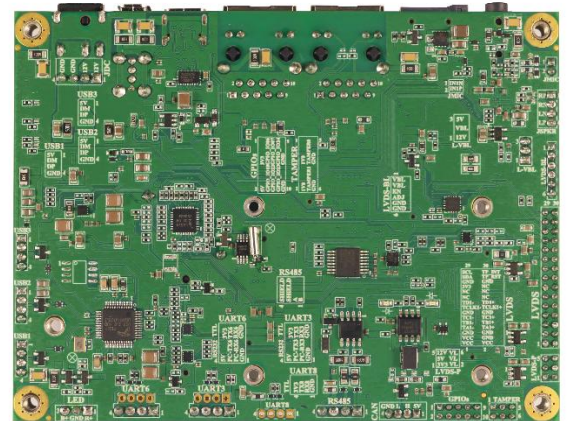
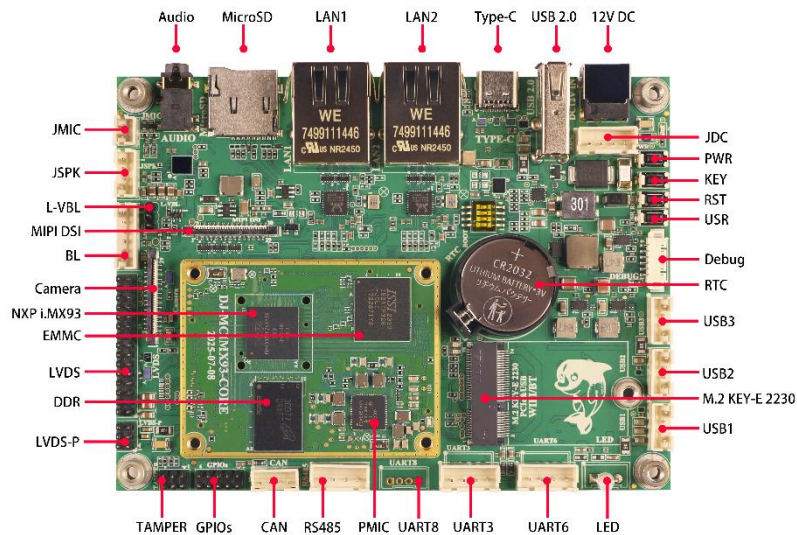
The DJ-MCIMX93 SBC features advanced information security, an integrated EdgeLock® secure zone in the processor, and software-optimized Secure Boot, which significantly enhances device data security.

The DJ-MCIMX93 SBC offers high performance, low power consumption, security, and cost advantages, making it ideal for a wide range of applications in industrial control, smart devices, measuring instruments, IoT gateways, medical equipment, robotics, artificial intelligence, drones, and more.

## Specification

CPU	<b>NXP i.MX9352 Industrial Processor:</b> Dual ARM Cortex®-A55 @1.7GHz Real-time coprocessor ARM Cortex-M33 @ 250Mhz Arm® Ethos™ U-65 microNPU, 0.5TOPS EdgeLock Secure Zone GPU 2D/GPU 3D: PXP-Hardware Compositor
Memory	1GB LPDDR4 (up to 2GB)
Storage	32GB eMMC5.1, 16GB and 64GB are optional. 1x microSD slot (Front Panel)
Display	1x LVDS (Four channels), Max resolution 720p60 1x MIPI_DSI (Four channels, 1.5Gbps per channel), maximum resolution 1080p60
Audio	1x Speaker Connectors(4Pin header) 1x 3.5mm Headphone Slot (Front Panel) 1x MIC Interface(2Pin header)
LAN	2 x 1000M RJ45(Front Panel)
Wireless	1x M.2 KEY-E2230 PCIe Slot for WiFi/BT Onboard NXP Wi-Fi IW612 M.2 Module
USB	1 x USB 2.0 Type C with PHY (Front Panel) 1 x USB 2.0 Type-A (Front Panel) 3 x USB 2.0(4Pin header)
UART	1x Debut UART 1x RS485 (multiplexed with UART6) 3x TTL/RS232 (1x TTL and 2x RS232)
CAN	1x CAN Industrial bus(4pin header)
Camera	1x MIPI CSI,Support AR0144 Supports USB UVC Camera
Button	Power ON/OFF, Reset, Boot Switch
LED	Dual-color LED light (red, green)
RTC	Support
Power supply	DC-in 12V 1x DC-in JACK 1x 4PIN Header
Environment	Operational from -40°C to +85°C (-40°F to +185°F)
OS	Yocto liunx6.6.52
QT	Supports QT6.8

## Interface



## Size

